



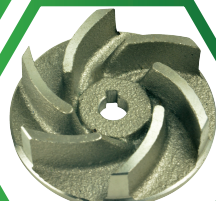
- Liquid temperature: 0 - 40°C/32 - 104°F
- HP range: 0.5 - 7.5HP / 0.4 - 5.5 KW
- PH: 6 - 8
- Rated Speed: 2900 rpm
- Protection calss: IP68
- Maximum depth: 8M

Features

1. Non-clogging vortex impeller.
2. Suspended impeller and high efficacy flow channel design, no blocking. The pass solid is 50mm.
3. The material is stainless steel which can endure light acid alkali.

Applications

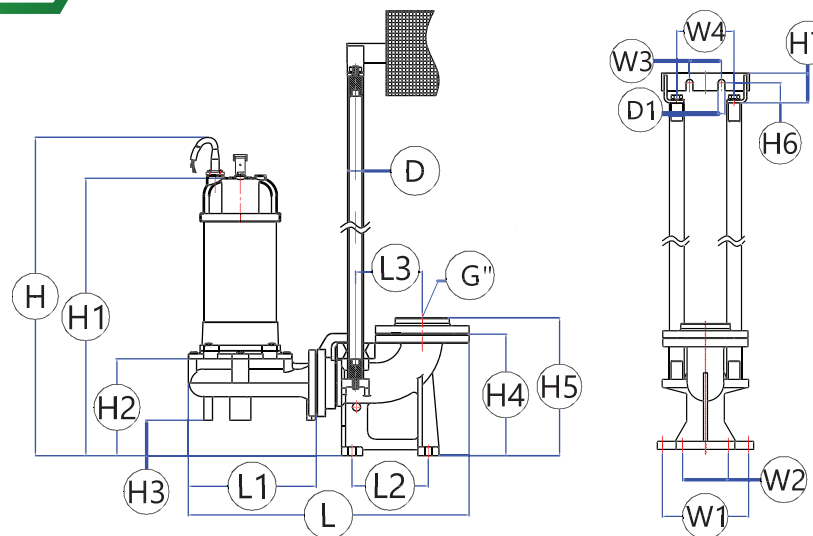
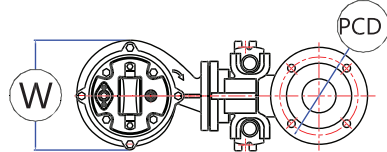
1. Industrial sewage discharge
2. Sawage and wastewater discharge containing chemicals



SB - 05



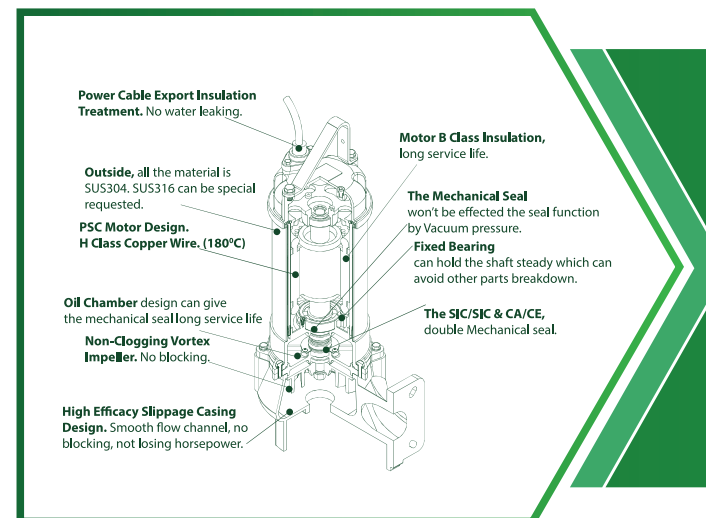
USE FOR 380V



Dimension

| Model | L | L1 | L2 | L3 | W | W1 | W2 | W3 | W4 | H | H1 | H2 | H3 | H4 | H5 | H6 | H7 | D | D1 | PCD | G |
|-------|-----|-----|-----|-----|-----|-----|-----|----|-----|-----|-----|-----|-----|-----|-----|----|----|----|----|-----|------|
| | mm | mm | mm | mm | mm | mm | mm | mm | mm | mm | mm | mm | mm | mm | mm | mm | mm | mm | mm | mm | inch |
| SB-20 | 560 | 255 | 152 | 133 | 210 | 100 | 188 | 70 | 125 | 635 | 555 | 193 | 70 | 242 | 275 | 44 | 65 | 32 | 15 | 150 | 3 |
| SB-30 | 560 | 255 | 152 | 133 | 210 | 100 | 188 | 70 | 125 | 655 | 575 | 193 | 70 | 242 | 275 | 44 | 65 | 32 | 15 | 150 | 3 |
| SB-50 | 675 | 288 | 230 | 202 | 216 | 252 | 252 | 70 | 125 | 745 | 650 | 275 | 113 | 346 | 366 | 44 | 65 | 32 | 15 | 175 | 4 |
| SB-75 | 675 | 288 | 230 | 202 | 216 | 252 | 252 | 70 | 125 | 775 | 680 | 275 | 113 | 346 | 366 | 44 | 65 | 32 | 15 | 175 | 4 |

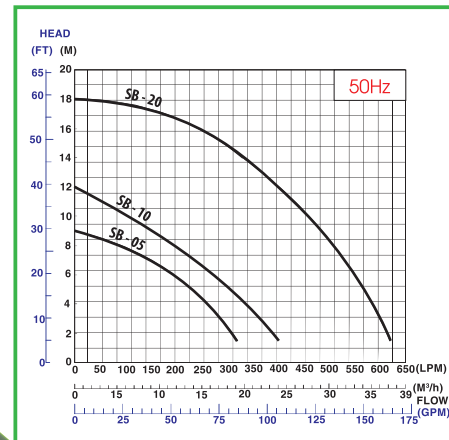
Sectional View



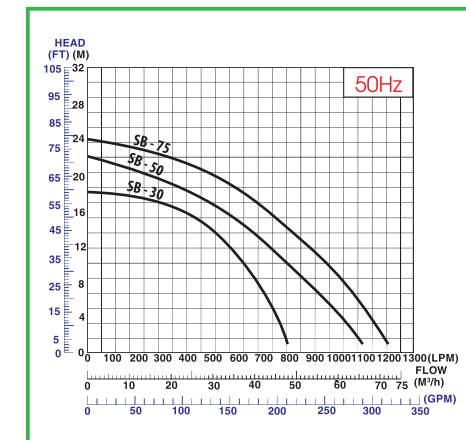
Standard Accessories

| Model No. | Accessories |
|-----------|--------------------------|
| SB-05 | Flange - Hose connection |
| SB-10 | Flange - Hose connection |
| SB-20 | Flange - Hose connection |
| SB-30 | Elbow - Flange |
| SB-50 | Elbow - Flange |
| SB-75 | Elbow - Flange |

Curve



Curve



Specification

| Model No. | Output HP KW | Outlet mm inch | Pass Solid Dia(mm) | Max Flow (LPM) | LPM Flow @ Head | | | | | Max Head (M) | Weight (Kg) |
|-----------|--------------|----------------|--------------------|----------------|-----------------|------|-----|-----|-----|--------------|-------------|
| | | | | | 3M | 6M | 9M | 12M | 15M | | |
| SB-05 | 1/2 0.4 | 50 2" | 30 | 320 | 285 | 190 | - | - | - | 9 | 14 |
| SB-10 | 1 0.75 | 50 2" | 30 | 400 | 360 | 270 | 160 | - | - | 12 | 21 |
| SB-20 | 2 1.5 | 80 3" | 35 | 620 | 600 | 550 | 490 | 410 | 280 | 18 | 32 |
| Model No. | Output HP KW | Outlet mm inch | Pass Solid Dia(mm) | Max Flow (LPM) | LPM Flow @ Head | | | | | Max Head (M) | Weight (Kg) |
| SB-30 | 3 2.2 | 80 3" | 35 | 780 | 755 | 720 | 610 | 420 | - | | |
| SB-50 | 5 3.7 | 100 4" | 50 | 1100 | 1050 | 980 | 800 | 590 | 250 | 22 | 45 |
| SB-75 | 7.5 5.5 | 100 4" | 50 | 1200 | 1170 | 1120 | 960 | 770 | 490 | 24 | 54 |

Construction

| Construction | | | | | |
|--------------|---------------------|---------------|-----|--------------|---------------|
| NO. | PART NAME | Materia | NO. | PART NAME | Materia |
| 01 | Top Cover | SUS304 | 12 | Ball Bearing | |
| 02 | Upper Bearing Cover | SUS304 | 13 | Me. Seal | SIC/SIC |
| 03 | Motor Housing | SUS304 | 14 | Oil Seal | VITON |
| 04 | Shaft | SUS316 | 15 | Upper Gasket | VITON |
| 05 | Stator | SILICON STEEL | 16 | O-Ring | VITON |
| 06 | Seal Plate | SUS304 | 23 | Nut | SUS304 |
| 07 | Me. Seal Cover | SUS304 | 24 | Handle Cover | SUS + SILICON |
| 08 | Impeller | SUS304 | 25 | Gland Cover | SUS304 |
| 09 | Pump Casing | SUS304 | 26 | Cable Gland | VITON |
| 10 | Capacitor | | 27 | O-Ring | VITON |
| 11 | Ball Bearing | | 28 | O-Ring | VITON |

